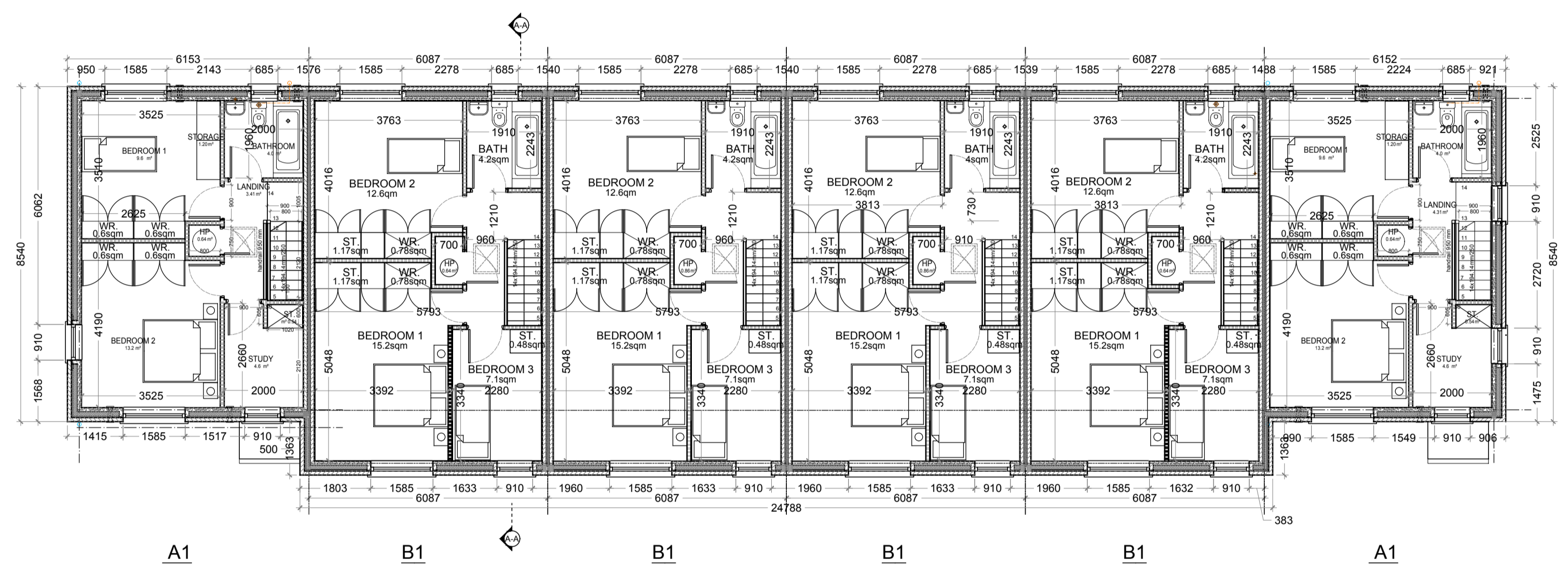


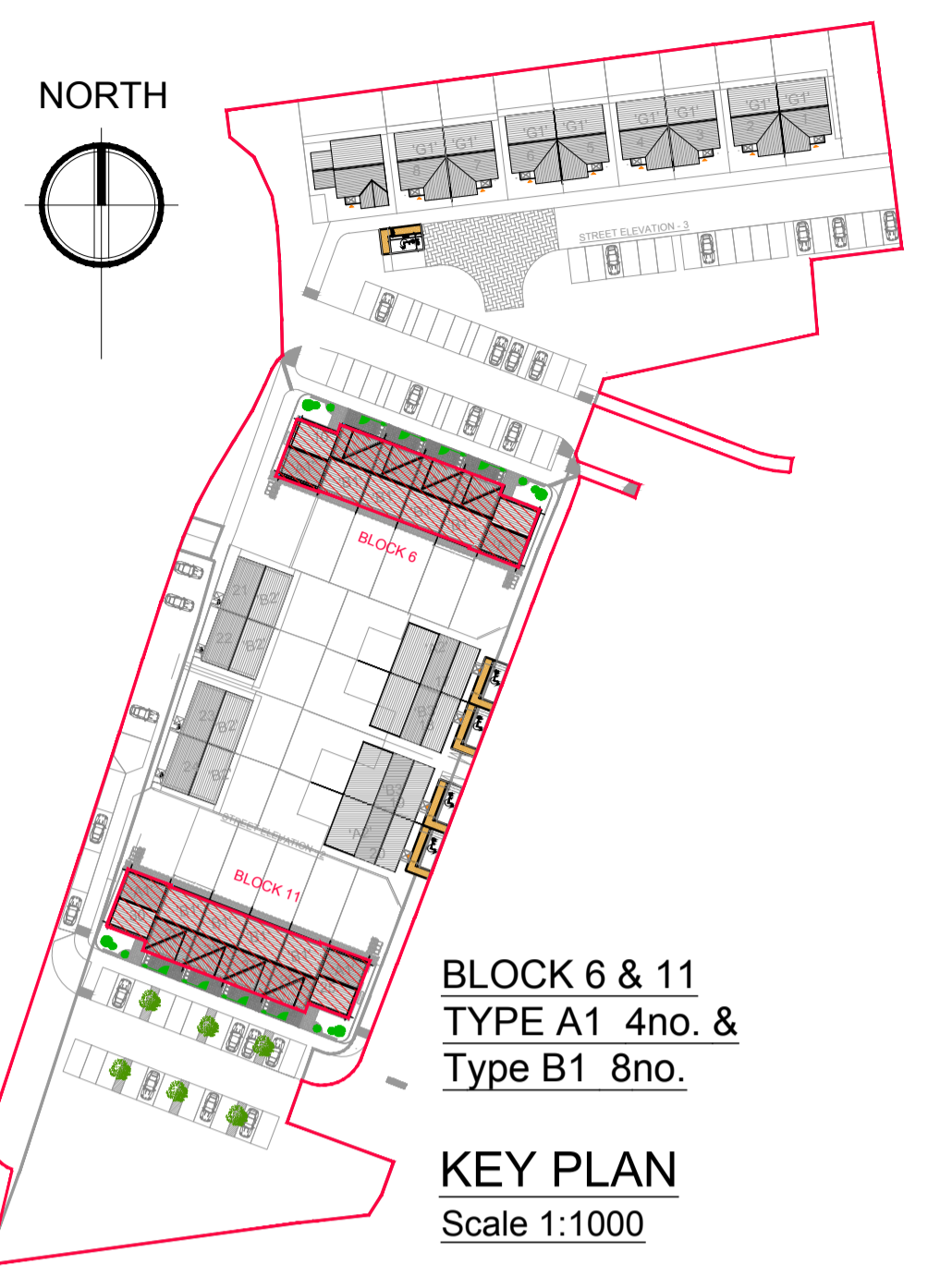
**Block 6&11 (4no. house type B1 & 2no. house type A1)**  
**Roof Plan**  
 Scale 1/100



**Block 6&11 (4no. Type B1 & 2no. Type A1)**  
**First Floor Plan**  
 Scale 1/100



**Block 6&11 (4no. house type B1 & 2no. house type A1)**  
**Ground Floor Plan**  
 Scale 1/100



**BLOCK 6 & 11**  
**TYPE A1 4no. &**  
**Type B1 8no.**

**KEY PLAN**  
 Scale 1:1000

**HOUSE TYPE A1 TWO BEDROOM**  
 Floor Area 88msq / 947sqft

Quality Housing for sustainable communities Plan space provision						
Dwelling Type	Gross Floor Area	Minimum Main Living room	Aggregate living area	Aggregate bedroom area	Storage	
Target	2 Bed 3P house	70	13	28	20	3
Proposed	2 Bed 3P house	88.00	16.00	32.20	22.70	6.15

PLEASE NOTE:  
 Minimum unobstructed living room width 3.6m.  
 Main bedroom area 13m2, Double room 11.4m2 (2.8m minimum width), Single 7.1m2 (2.1m minimum width), minimum Private Open Space: 55m2  
 Storage calculations do not allow for wardrobes or kitchen cupboards but do allow for 3.5sqm of attic storage.

**HOUSE TYPE B1 THREE BEDROOM**  
 Floor Area 101.6msq / 1093sqft

Quality Housing for sustainable communities Plan space provision						
Dwelling Type	Gross Floor Area	Minimum Main Living room	Aggregate living area	Aggregate bedroom area	Storage	
Target	3 Bed 4P house	83	13	30	28	4
Proposed	3 Bed 4P house	101.60	16.40	37.30	35.00	9.18

PLEASE NOTE:  
 Minimum unobstructed living room width 3.6m.  
 Main bedroom area 13m2, Double room 11.4m2 (2.8m minimum width), Single 7.1m2 (2.1m minimum width), minimum Private Open Space: 60m2  
 Storage calculations do not allow for wardrobes or kitchen cupboards but do allow for 3.5sqm of attic storage.

**HOUSE TYPE A1 TWO BEDROOM**  
 Floor Area 88msq / 947sqft

Kildare County Development Plan space provision			
Dwelling Type	Gross Floor Area	Storage	
Target	2 Bed 3P house	85	6
Proposed	2 Bed 3P house	88.00	6.15

PLEASE NOTE:  
 Minimum unobstructed living room width 3.6m.  
 Main bedroom area 13m2, Double room 11.4m2 (2.8m minimum width), Single 7.1m2 (2.1m minimum width), minimum Private Open Space: 55m2  
 Storage calculations do not allow for wardrobes or kitchen cupboards but do allow for 3.5sqm of attic storage.

**HOUSE TYPE B1 THREE BEDROOM**  
 Floor Area 101.6msq / 1093sqft

Kildare County Development Plan space provision			
Dwelling Type	Gross Floor Area	Storage	
Target	3 Bed 4P house	100	9
Proposed	3 Bed 4P house	101.60	9.18

PLEASE NOTE:  
 Minimum unobstructed living room width 3.6m.  
 Main bedroom area 13m2, Double room 11.4m2 (2.8m minimum width), Single 7.1m2 (2.1m minimum width), minimum Private Open Space: 55m2  
 Storage calculations do not allow for wardrobes or kitchen cupboards but do allow for 3.5sqm of attic storage.

**Planning Part 8**



**CRP Note:**  
 All works to be carried out using proper materials which are fit for the use they are intended and for the condition in which they are to be used.  
 All materials used in connection with the works to comply with the Construction Products Regulation (EU) No. 305/2011 and the harmonised technical specifications/standards that fall within the remit of the CRP No. 305/2011

**van Dijk Architects**  
 MILL HOUSE, MILL STREET, DUNDALK, CO. LOUTH  
 PH: 042-9554466 FAX: 042-9554460  
 INFO@VANDIJKARCHITECTS.COM

**DRAWING TITLE**  
 BLOCK 6&11 (4NO. OF TYPE B1 HOUSES AND 2NO. OF A1 TYPE)- FLOOR PLAN

SCALE: 1/100  
 CLIENT: SALLINS COURT  
 CLIENT: KILDARE COUNTY COUNCIL  
 DATE: 08/11/2017

NOTE:  
 FILED DRAWINGS MUST BE USED IN PREFERENCE TO SCANNED VERSIONS. ANY OPERATIONAL DISCREPANCIES MUST BE REPORTED TO THE ARCHITECT IMMEDIATELY. THIS DRAWING REMAINS THE COPYRIGHT OF VAN DIJK ARCHITECTS. IT MUST NOT BE USED FOR ANY PURPOSES OUTSIDE OF THE EXPRESS PERMISSION OF THE ARCHITECT. DO NOT COPY OR REPRODUCE THESE DRAWINGS OR ANY ADDITIONAL INFORMATION WITHOUT THE EXPRESSED APPROVAL OF vanDijk Architects